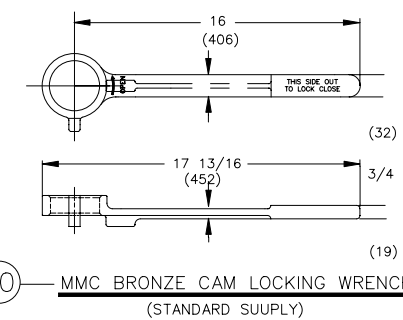
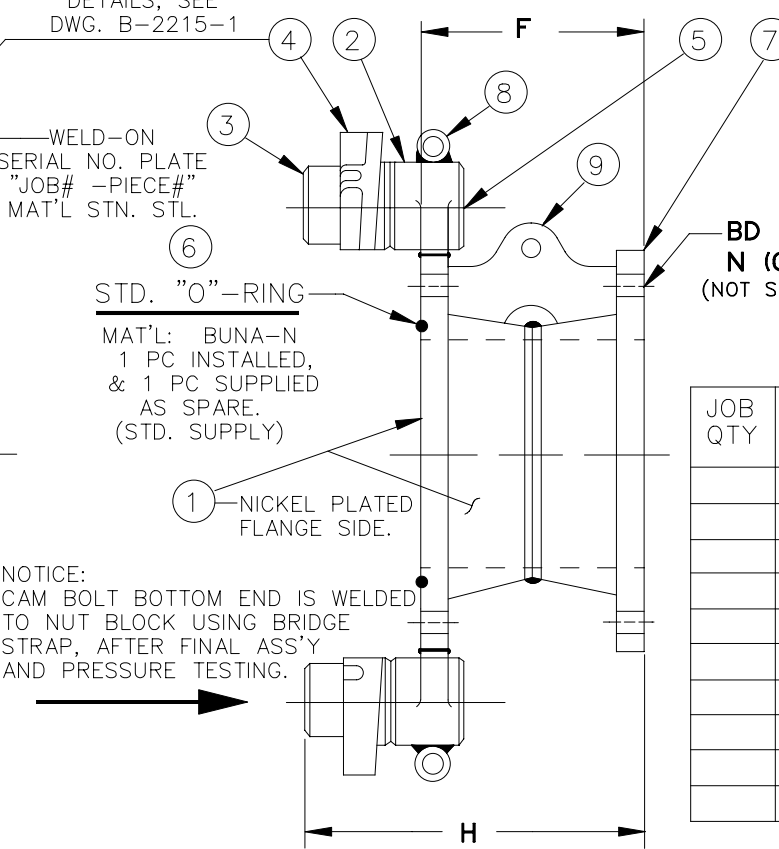
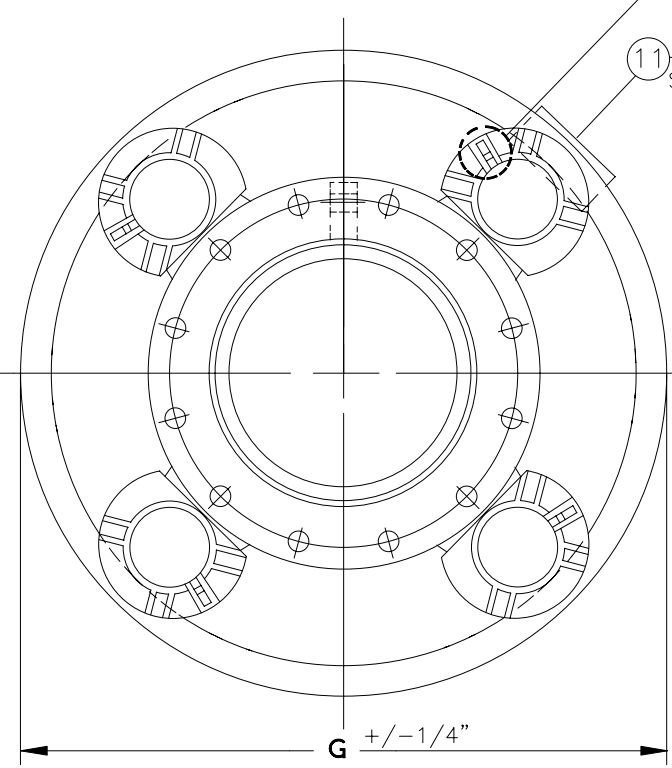


UNAUTHORIZED USE, MANUFACTURE, OR REPRODUCTION IN WHOLE OR IN PART IS PROHIBITED.

FOR RATCHET LOCK DETAILS, SEE DWG. B-2215-1

RATCHET LOCK CAMS

REVISIONS			
SYM	DESCRIPTION	DATE	APP'D.



11—WELD-ON SERIAL NO. PLATE "JOB# -PIECE#" MAT'L STN. STL.

6—STD. "O"-RING MAT'L: BUNA-N 1 PC INSTALLED, & 1 PC SUPPLIED AS SPARE. (STD. SUPPLY)

1—NICKEL PLATED FLANGE SIDE.

NOTICE: CAM BOLT BOTTOM END IS WELDED TO NUT BLOCK USING BRIDGE STRAP, AFTER FINAL ASS'Y AND PRESSURE TESTING.

JOB QTY	SIZE A.N.S.I. 150#	CAM QTY	DIM "F"	DIM "G"	DIM "H"	ASSEMBLY WEIGHT		BOLT DIA. LENGTH "BD x L" MIN.	QTY "N"
						LBS	KGS		
	4"	3	6"	19	9 5/8	89	40	5/8 x 3	8
	6"	3	7"	21 3/4	10 11/16	110	50	3/4 x 3 1/4	8
	8"	3	8"	23 3/4	11 7/8	141	64	3/4 x 3 1/2	8
	10"	4	8"	27	11 15/16	185	84	7/8 x 3 3/4	12
	12"	4	9"	29 3/4	12 15/16	242	110	7/8 x 4	12
	14"	5	10"	32	14 1/16	320	145	1 x 4 1/4	12
	16"	5-6	10"	33 5/8	14 1/8	387	176	1 x 4 1/2	16
	18"	8	11"	35 3/16	15 1/4	450	204	1-1/8x4 3/4	16
	20"	10	11 3/8"	37 3/4	15 3/4	537	244	1-1/8x5 1/4	20
	24"	12	12"	42 3/8	16 9/16	732	332	1-1/4x5 3/4	20

NOTES:

- OVERALL DIMENSIONS PER TABLE
- EXTERIOR FINISH: ONE COAT EACH, PRIMER, RED OXIDE ALKYD ENAMEL. FINISH, JOTUN PILOT II #39W72 ENAMEL, BLUE-GRAY TINT #F-23. OR EQUIVALENT PRIMER/FINISH COATINGS. INTERIOR FINISH: ONE COAT BLACK GLOSS WATERBORNE ENAMEL.
- STD. HYDROSTATIC TEST PRESS: 450PSI (32KG). MAX. WORKING PRESSURE 285PSI (20KG) @ 100°F (38°C).
- ASSEMBLED WEIGHT IN AIR: (SEE TABLE)
- ALL WELDING JOINTS PER ASME V / API 1104. DYE PENETRANT TESTING ALL JOINTS STD., X-RAY INSPECTION OF FLANGE TO FLANGE BUTT WELD AS REQUESTED BY CUSTOMER AS QUOTED EXTRA COST.
- FLANGE DIMENSIONS, TOLERANCES, AND MATERIAL SPECIFICATIONS PER A.N.S.I. B16.5. MATING FLANGE SIZE TO A.N.S.I. B16.5
- SEE TABLE FOR CAM QUANTITY PER COUPLING SIZE.
- LIFTING PAD OPTIONAL PER CUSTOMER PURCHASE ORDER.

1	10	WRENCH, CAM LOCKING, ALLOY 8A, PT# A-1384-1A	BRONZE	A147
SEE NOTE 8	9	LIFTING PAD, TYP. SHOWN, LOADING & QTY. TO BE SPEC'D	STEEL	A285
1	8	CAM GUARD RING, 1 1/4 DIA., SCH. 160 WALL THK. PIPE	STEEL	A106
1	7	FLANGE, WELD-NECK, 150# A.N.S.I., FLAT FACE	STEEL	A105
2	6	"O"-RING, PER C/L SIZE, (1 PC INSTALLED + 1 SPARE)	BUNA-N	
1 PER CAM ASSY	5	GREASE FITTING, RECESSED, STD. ALEMITE CONNECTION	STN.STL.	T304
SEE NOTE 7	4	CAM, RATCHET LOCK TYPE, ALLOY CA-6NM, PT# B-2215-7	STN.STL.	A487
SEE NOTE 7	3	CAM BOLT, NICKLE PLATED, PT# A-1103-4	STEEL	A311
SEE NOTE 7	2	NUT BLOCK, CAST STL., WCB, PT# PER D2275-1/2/3	STEEL	A216
1	1	FLANGE, W/NECK, 150# A.N.S.I., FLAT FACE, NICKEL PLATED	STEEL	A105
REQ'D	PT.#	DESCRIPTION	MAT'L	ASTM#

JOB NO. CUST: P.O. # QTY.:	DIMENSIONAL TOLERANCES UNLESS OTHERWISE SPECIFIED			MMC 150# A.N.S.I. C-L FLANGE SPOOL PIECE SUBMERSIBLE SERVICE		MMC INTERNATIONAL CORP. INWOOD, L.I. NEW YORK			
	FRAC.	DEC.	ANG.						
	± 1/8			SCALE NONE	NO. REQ'D	DRAWN: F.S.G	DATE: 11-22-04	DWG. NO.	REV
				ASS'Y PART NO.		CHK'D:	DATE:	B2277-2-STLR	
					APP'D:	DATE:			